

CMTM7 Antibody (N-term)
Affinity Purified Rabbit Polyclonal Antibody (Pab)
Catalog # AP5023a

Specification

CMTM7 Antibody (N-term) - Product Information

| | |
|-------------------|------------------------|
| Application | FC, WB,E |
| Primary Accession | Q96FZ5 |
| Reactivity | Human |
| Host | Rabbit |
| Clonality | Polyclonal |
| Isotype | Rabbit IgG |
| Calculated MW | 18834 |
| Antigen Region | 13-42 |

CMTM7 Antibody (N-term) - Additional Information

Gene ID 112616

Other Names

CKLF-like MARVEL transmembrane domain-containing protein 7, Chemokine-like factor superfamily member 7, CMTM7, KLFSF7

Target/Specificity

This CMTM7 antibody is generated from rabbits immunized with a KLH conjugated synthetic peptide between 13-42 amino acids from the N-terminal region of human CMTM7.

Dilution

FC~~1:10~50

WB~~1:1000

E~~Use at an assay dependent concentration.

Format

Purified polyclonal antibody supplied in PBS with 0.09% (W/V) sodium azide. This antibody is purified through a protein A column, followed by peptide affinity purification.

Storage

Maintain refrigerated at 2-8°C for up to 2 weeks. For long term storage store at -20°C in small aliquots to prevent freeze-thaw cycles.

Precautions

CMTM7 Antibody (N-term) is for research use only and not for use in diagnostic or therapeutic procedures.

CMTM7 Antibody (N-term) - Protein Information

Name CMTM7

Synonyms CKLFSF7**Cellular Location**

Membrane; Multi-pass membrane protein.

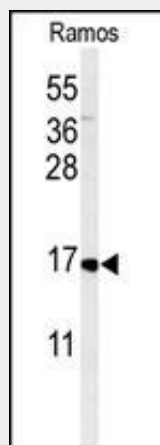
Tissue Location

Highly expressed in leukocytes.

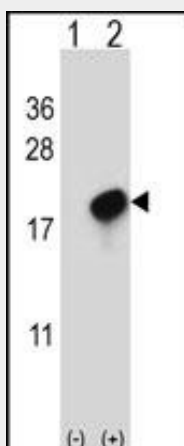
CMTM7 Antibody (N-term) - Protocols

Provided below are standard protocols that you may find useful for product applications.

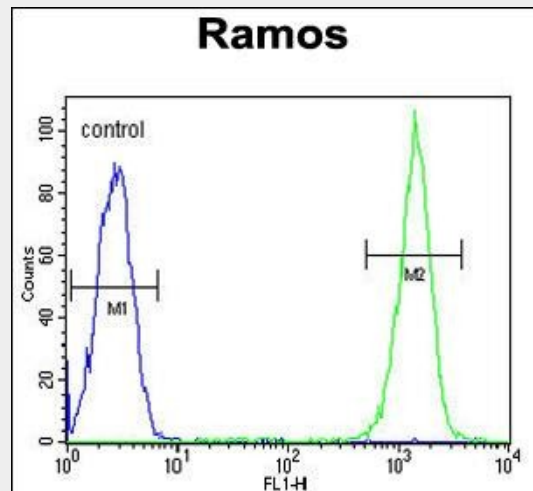
- [Western Blot](#)
- [Blocking Peptides](#)
- [Dot Blot](#)
- [Immunohistochemistry](#)
- [Immunofluorescence](#)
- [Immunoprecipitation](#)
- [Flow Cytometry](#)
- [Cell Culture](#)

CMTM7 Antibody (N-term) - Images

Western blot analysis of CMTM7 Antibody (N-term) (Cat. #AP5023a) in Ramos cell line lysates (35ug/lane). CMTM7 (arrow) was detected using the purified Pab.



Western blot analysis of CMTM7 (arrow) using rabbit polyclonal CMTM7 Antibody (N-term) (Cat. #AP5023a). 293 cell lysates (2 ug/lane) either nontransfected (Lane 1) or transiently transfected (Lane 2) with the CMTM7 gene.



CMTM7 Antibody (N-term) (Cat. #AP5023a) flow cytometric analysis of Ramos cells (right histogram) compared to a negative control cell (left histogram). FITC-conjugated goat-anti-rabbit secondary antibodies were used for the analysis.

CMTM7 Antibody (N-term) - Background

CMTM7 belongs to the chemokine-like factor gene superfamily, a novel family that is similar to the chemokine and transmembrane 4 superfamilies. This gene is one of several chemokine-like factor genes located in a cluster on chromosome 3. The protein encoded by this gene is highly expressed in leukocytes, but its exact function is unknown.

CMTM7 Antibody (N-term) - References

Han, W., et al. Genomics 81(6):609-617(2003)